



# Photo Scavenger Hunt

Finding the Principles & Elements

Copyright-Free and Royalty-Free Images from  
Pixabay in this document



# Brainstorming:

- Are the principles and elements of art and design *only* seen through fine and modern art?
- How do/can we use the principles in our living spaces? How does that affect us?

---

**Elements of Art:** Those components that make up a composition: line, value, space, texture, shape, form and color.

**Principles of Design:** The way the elements of art are used to create a composition, such as balance, movement, pattern/repetition, unity/variety and emphasis.



# Here's an example Scavenger Hunt



**Guided Practice:** Analyze the images to Interpret how the Principles and Elements of art and design are implemented in our environment.

*\*The following image were taken by Dorothy Smith 2015-2018*





Line





**Positive & Negative Space**





**Shape**

DFILL





**Form**





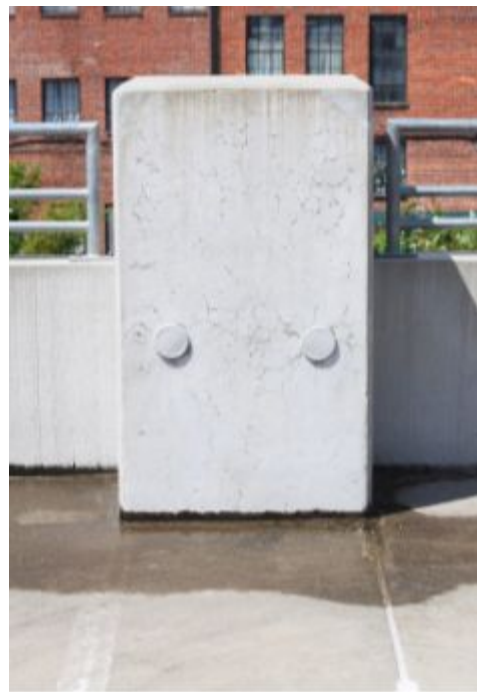
**Texture**





**Color**





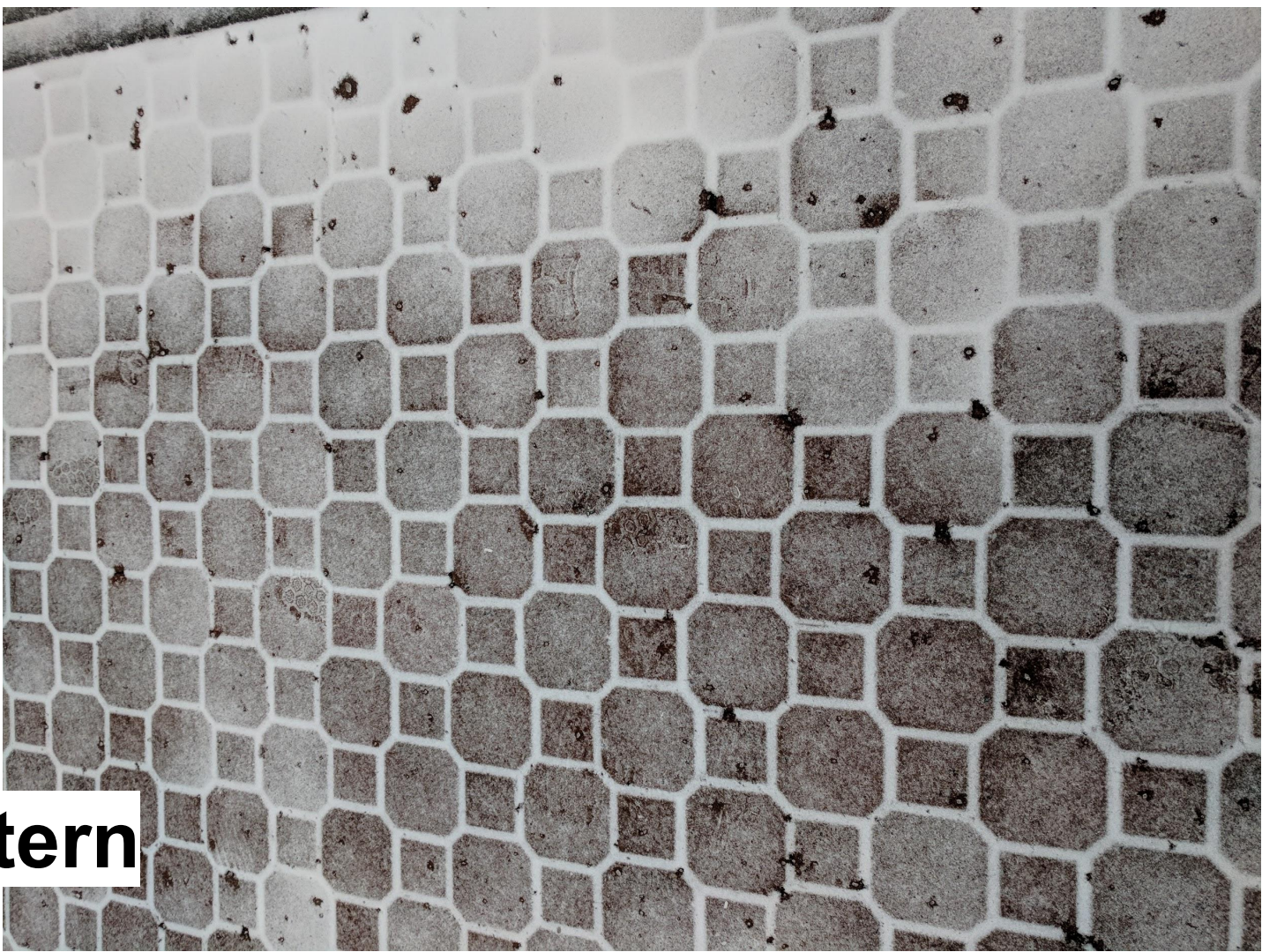
**Balance**





**Emphasis / Focal Point**





**Pattern**





**Rhythm / Repetition**





**Scale**





**Unity**



# It's Your Turn



- **Google Slide presentation:**
  - Create a **title page** (Title of “Photo Scavenger Hunt” with subtitle of “Principles & Elements of Art and Design”, your name, class, and West)
  - Each page should represent one principal or element from our list (you may have 2 images per page if you wish), x12 pages.
- **Google Doc:**
  - Write a statement describing the principle or element per each image. (1-3 pages, Arial 11 pt. font, double-spaced)
  - At the end, write one paragraph on what you learned from this experience.



# *You're on the Hunt for the P&E of Art and Design...*

- ❖ **Line** - A defined path between two points. Lines can be straight or curved and may define the edge of a horizon, form, or shape.
- ❖ **Space** - The area around defined shapes or objects; **Positive space** is the active space within the composition, while **negative space** is the passive space within the composition.
- ❖ **Shape** - A defined two-dimensional area; For example: Triangle, square, circle, oval, etc.
- ❖ **Form** - A three-dimensional shape; A shape with ranged **value** of shading and highlights giving a perceived third dimension.
- ❖ **Texture** - The physical look of a surface area, be it rough or smooth.
- ❖ **Color** - A hue of pigments seen when light touches an object and reflects back to the eye.
- ❖ **Balance** - The perceived weight of arranged objects and space in a composition; positive space carries more weight than negative space.
- ❖ **Emphasis** - The focus area or object within the composition.
- ❖ **Pattern** - The repetition of defined shapes or objects in a regular arrangement.
- ❖ **Repetition** - The recurrence of shapes or objects without a regular arrangement; may also be referred to as **Rhythm**.
- ❖ **Proportion** - The relationship of size between objects often relating to **scale**.
- ❖ **Unity** - The combination of principles and elements of design in harmony within a composition.